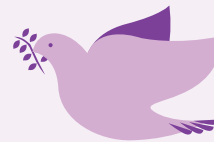


About Us.

Towards Healing is a Counselling and Support Service for Survivors of Institutional, Clerical and Religious abuse, funded by the Catholic Church.

It replaces the Faoiseamh Counselling Service, which has been in operation since 1997, and which has provided face-to-face counselling to over 5,000 persons during that time, as well as Helpline support to over 15,000 survivors of Institutional, Clerical and Religious abuse.

The services provided by Towards Healing are developed in consultation with representatives of Survivors, and will include Facilitated Listening Meetings, Psycho-Educational Groups, Counselling Services, Helpline Services, Practical Workshops and Advocacy designed to link clients to services relevant to their needs.



TOWARDS HEALING

A Catholic Church response to Institutional/Clerical/Religious abuse

P.O. Box 5654, Dublin 14

Mobile Number for Hearing Impaired Service Users Only:

085 802 2859

Freephone (Ireland):

1800 303416

Freephone (UK):

0800 0963315

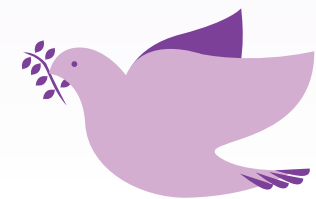
***Free
and Confidential
Helpline
and Counselling
Referral Service***

FREEPHONE

(IRE) 1800 303416

(UK) 0800 0963315

www.towardshealing.ie



TOWARDS HEALING

A Catholic Church response to Institutional/Clerical/Religious abuse

Questions

WHAT SERVICES ARE AVAILABLE THROUGH TOWARDS HEALING?

- Counselling Helpline
- Weekly individual face to face counselling for survivors, their partners, parents, siblings and children.
- 12 Sessions of couple/family therapy counselling (where the need arises)
- Practical Workshops
- Psycho-Educational Groups
- Facilitated Listening Meetings.
- Telephone Counselling.
- Advocacy
- Parent Coaching

WHO IS ELIGIBLE TO RECEIVE SERVICES THROUGH TOWARDS HEALING?

Towards Healing provides counselling and support for people who, as minors, suffered physical and sexual abuse by members of, or while in the care of the Catholic Church in Ireland. We can provide services to clients regardless of where they currently live.

HOW DO I CONTACT TOWARDS HEALING?

You can call us on
1800-303416 (Rep. of Ireland),
0800-0963315 (N.I. and U.K.)

You can email us at
casemanager@towardshealing.ie

You can visit us online at
www.towardshealing.ie

The Helpline operates
Monday – Thursday
from 11am – 8pm and on
Fridays from 11am to 6pm

WHAT ABOUT MY FAMILY?

Towards Healing can provide and pay for counselling for spouses/partners, parents, siblings and children of survivors of Institutional/Clerical/Religious abuse.

IS EVERYTHING I TALK ABOUT IN COUNSELLING CONFIDENTIAL?

Yes it is. **HOWEVER**, if the Counsellor believes that you or someone else is in serious danger they must share this information to ensure safety.

WHAT ABOUT CHILD PROTECTION?

Towards Healing is totally committed to Child Protection. You are welcome to discuss any concerns with our Child Protection Officer at 085 8801643.

ANY OTHER QUESTIONS?

Call us – no question is too big or too small.

HELPLINE HOURS

FREEPHONE (IRE) 1800 303416

FREEPHONE (UK) 0800 0963315

MOBILE NUMBER FOR HEARING IMPAIRED SERVICE USERS ONLY
085 802 2859

Monday – Thursday
from 11am – 8pm

Friday's
from 11am to 6pm